

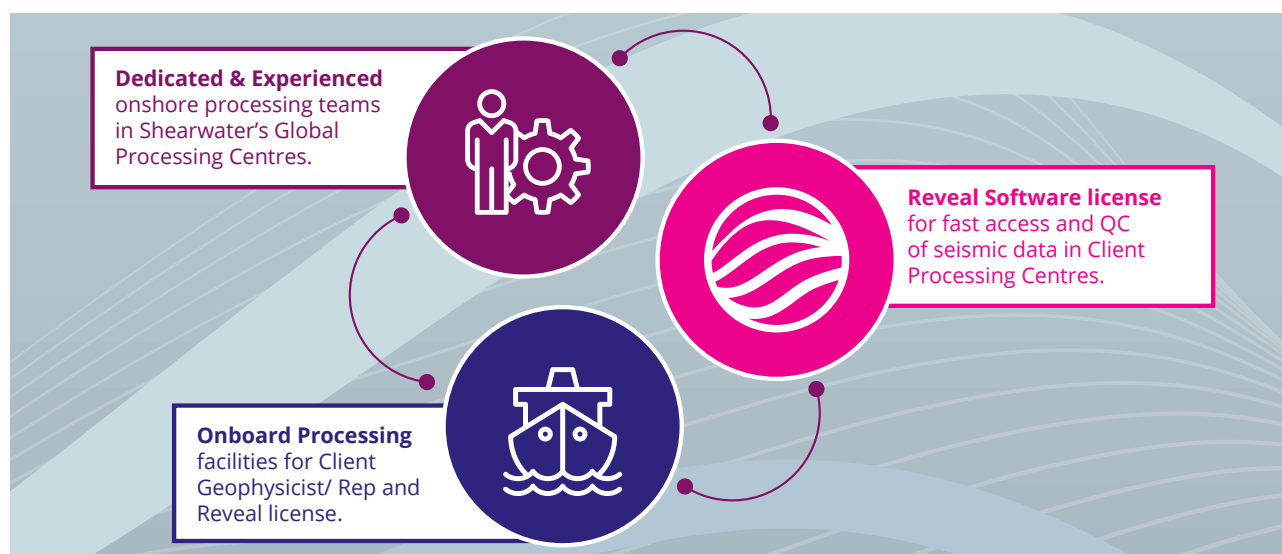
### Onboard Fast Track Processing



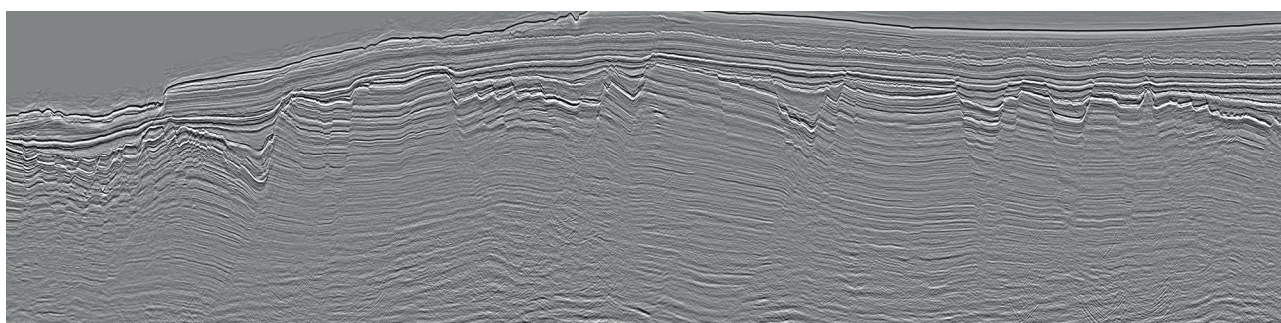
The Shearwater onboard Fast Track Processing provides high-end early interpretation

- Dedicated supervision
- Receiver de-ghosting
- Linear and swell noise removal (multi-domain)
- Seismic Interference removal
- Advanced de-multiple, including 3D-SRME
- Source de-ghosting, de-signature and de-bubble derived from the near field hydrophones, Shearwater **SHarpSig**

The Shearwater business lines work together to produce the highest quality result for your survey:



Shearwater onboard processing provides interpreters with a high end Fast Track product that allows early interpretation. The Fast Track sequence is designed in collaboration with each client and all the technology used in onshore processing is available on our vessels Fast Track delivery is typically within 6 weeks of the survey completion.



Shearwater has permanent Fast Track capabilities on all our vessels, highly experienced processing staff and the processing power required to complete intensive processing sequences onboard the vessel. This allows us to produce a wide range of Fast Track products, from Post-Stack Migrations to full 3DSRME PSTM/PSDM sequences.

The Shearwater onboard and onshore processing and imaging teams work closely together to ensure we deliver the same quality on our vessels as in our offices. Depending on client needs, we split the Fast Track processing between the vessel and a dedicated team onshore with a seamless transition.

#### Fast Track Processing Highlights:

- Full Set of de-multiple tools (SWME, 2D/3D SRME, Hi-Res Radon, Deconvolution)
- Velocity picking (2nd order and 4th Order)
- 3D Regularisation
- PoSTM, PSTM & PSDM

The flow chart below shows typical Fast Track Processing options. Sequences are tailored to meet our clients' requirements.

