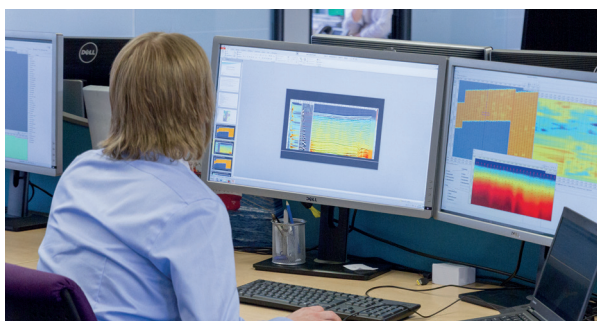
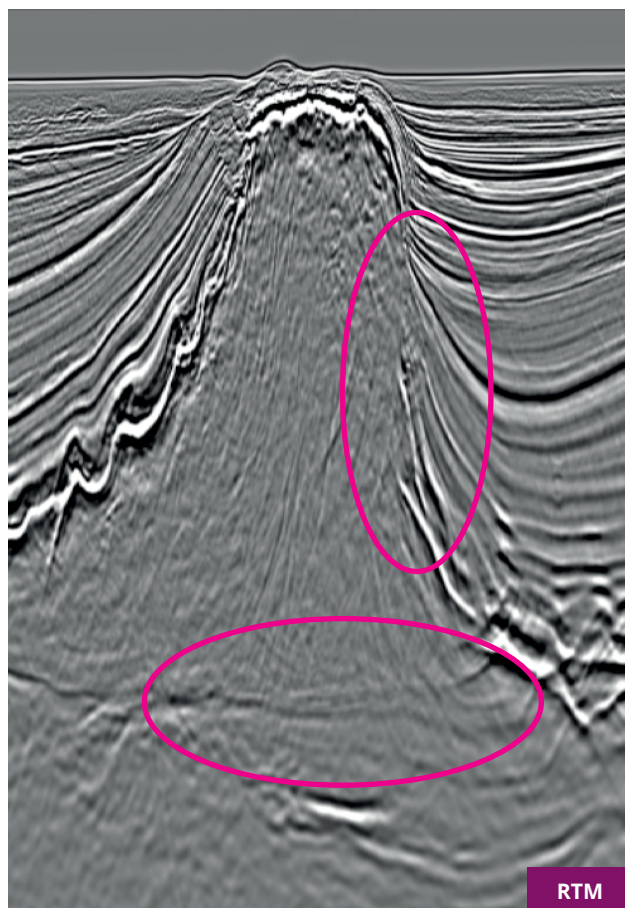
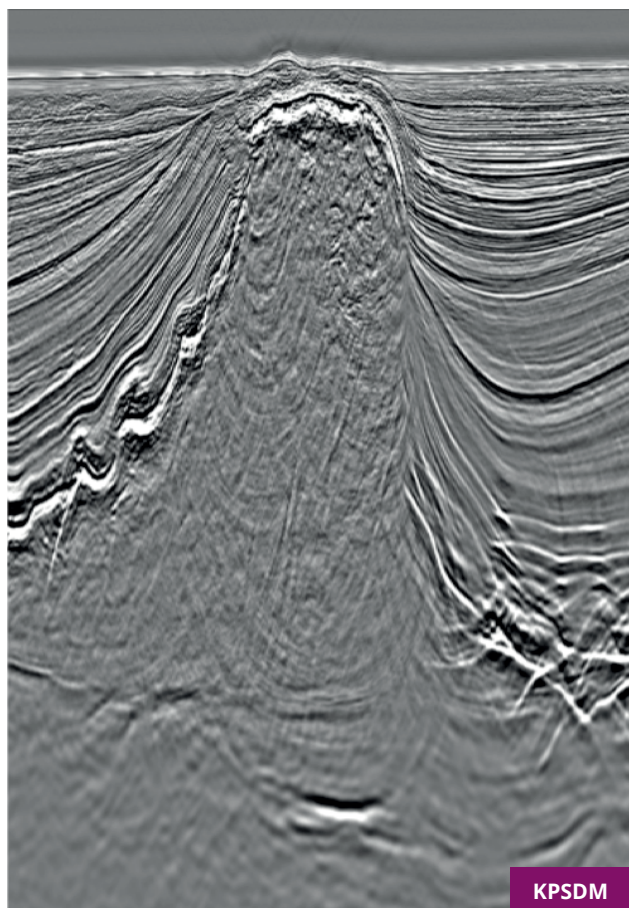


### Reverse Time Migration



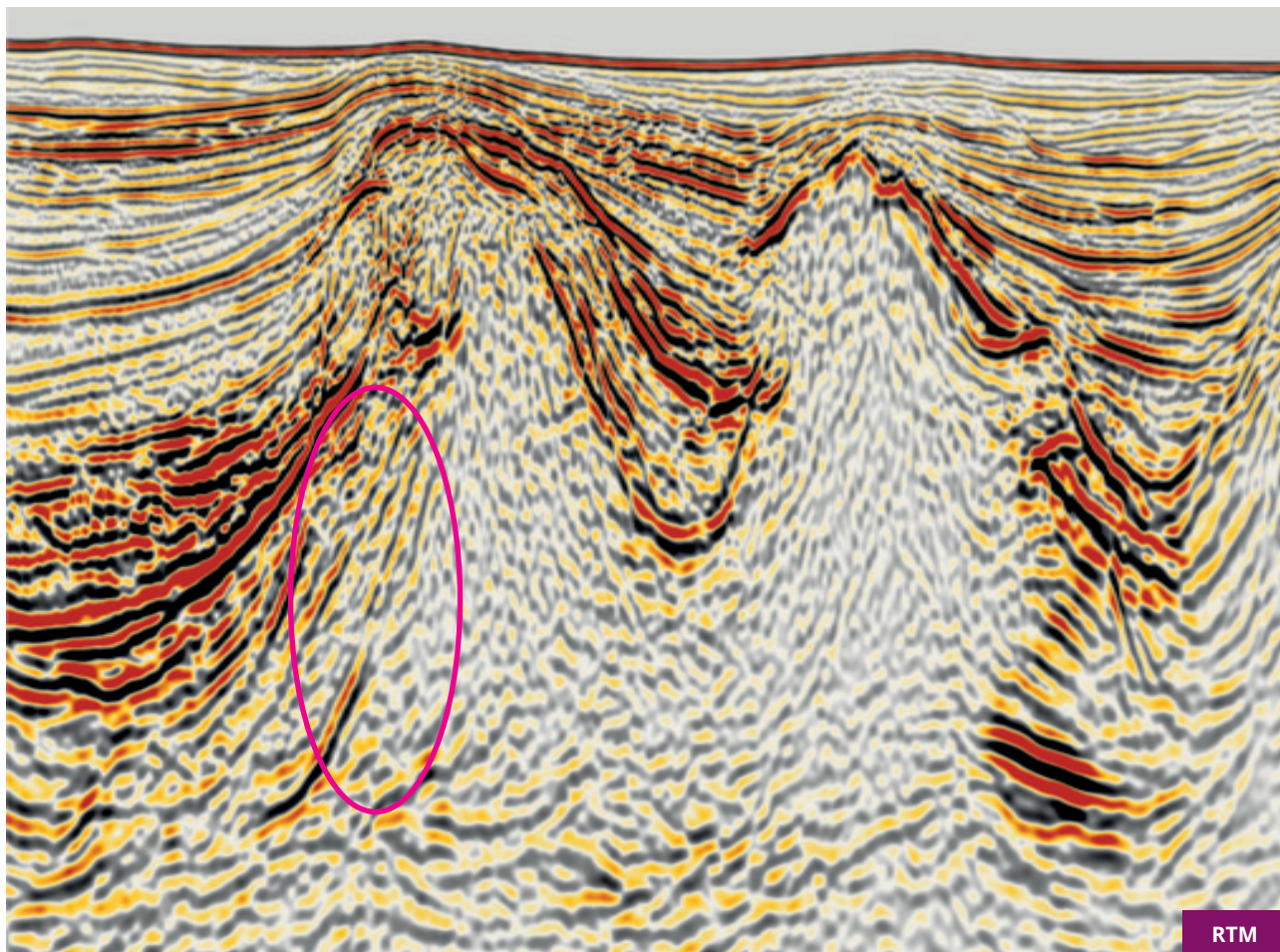
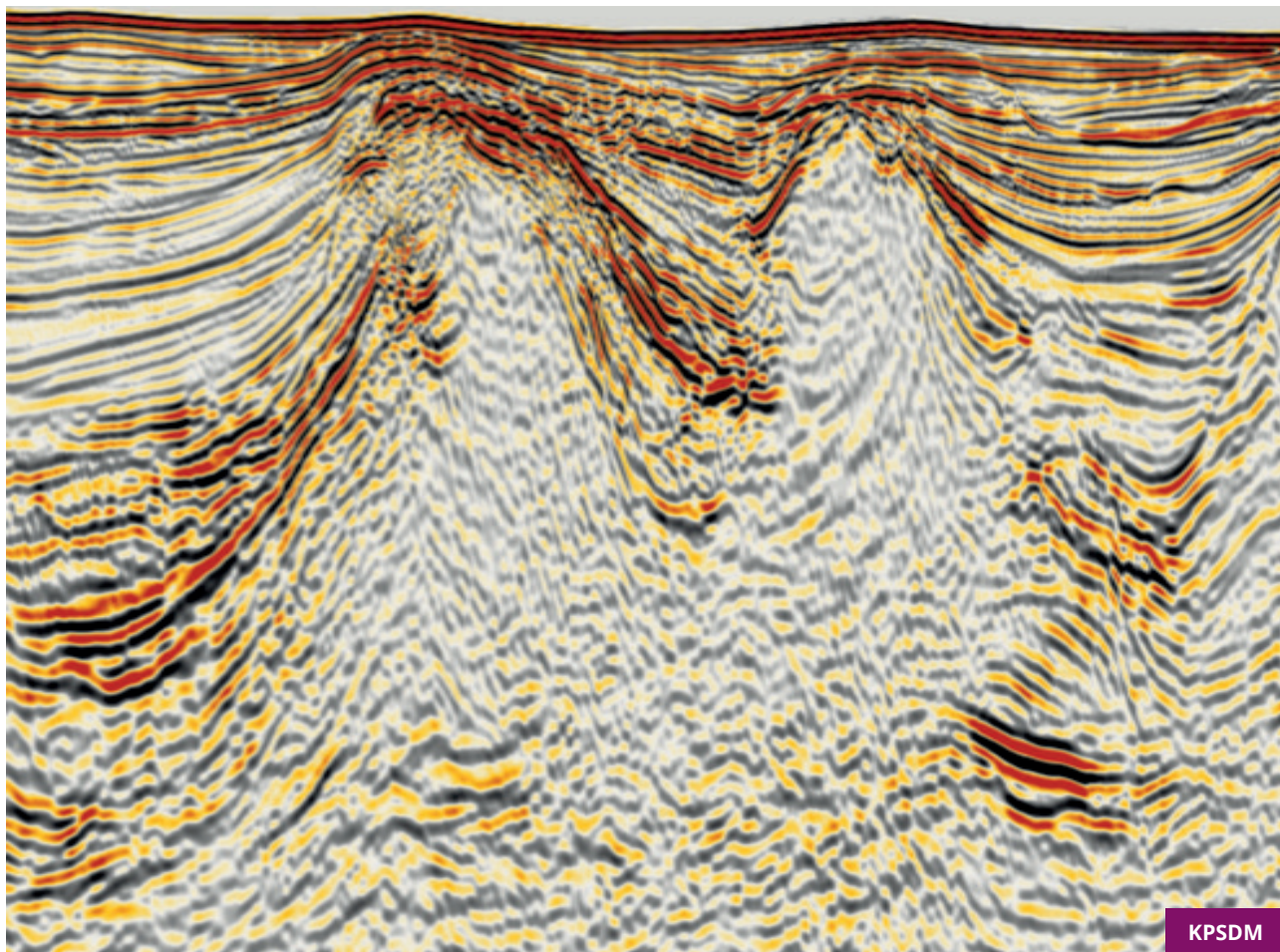
The Shearwater Reverse Time Migration (RTM) provides enhanced depth imaging in the most complex geology

- Depth imaging below sharp lateral velocity changes
- Isotropic, VTI and TTI anisotropic
- Detailed velocity models
- Two way wave equation



The Shearwater RTM is our most advanced depth imaging method. It is suited to geology with rapid or sudden lateral changes in velocity that cause significant distortion of the wavefront. Its use of the two-way wave equation allows clear imaging below the most complex overburdens. The input velocity models can also include small scale details.





SW\_PL\_RTM 0.1.1