

# ***SHEARWATER***

Clearly Better.

Revealing possibilities  
[shearwatergeo.com](http://shearwatergeo.com)



Marine Acquisition



Processing & Imaging



Reveal Software



Multi-Client





Clearly Better.

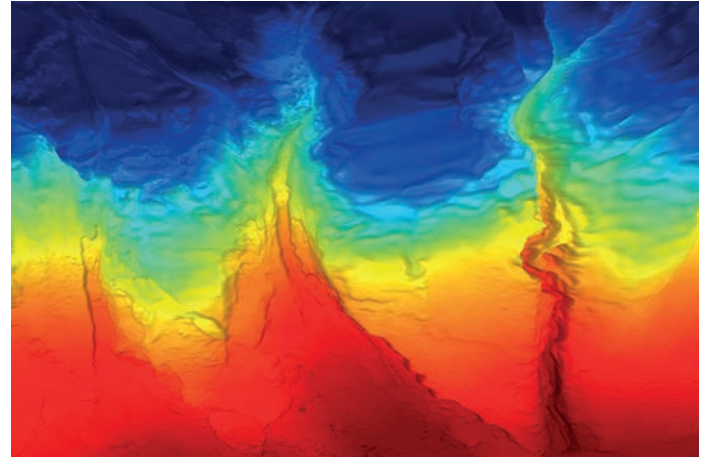
Our modern fleet, expert imaging teams and innovative software combine to offer exceptional results. Fast, flexible and cost-effective, Shearwater is the cutting edge geophysical services company.

# SHEARWATER



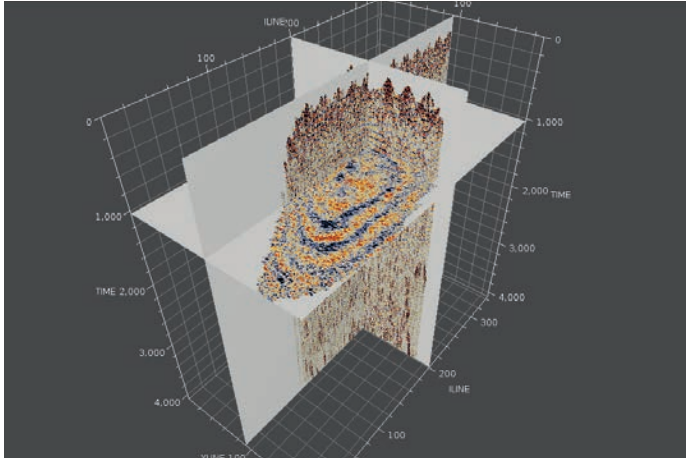
## Marine Acquisition

A powerful fleet, complete with modern technology, manned by experienced crews with advanced Fast Track processing capacity. Work safely and efficiently, in all operating conditions  
- delivering a cost-effective, high-quality service.



## Processing & Imaging

Agile, responsive teams of experts, available when, where and for however long you need them. Get high-quality data rapidly, reduce costs and build in flexibility at the heart of your project.



Reveal Software

A modern, powerful and intuitive solution for demanding seismic data analysis, Reveal is a full processing software that can scale to run from a laptop in the field through to the largest data centre.



Multi-Client

Our full service Multi-Client business offers refreshing flexibility and clarity. Reduce financial exposure and maximize your exploration returns.

## We are Shearwater

By implementing a strong working culture our teams understand their expectations. This enables both careers and the company to grow continuously, providing clients with the best quality service.

Shearwater is a new and innovative global provider of 3D marine seismic data, imaging products and data processing software. Our fleet of modern purpose-built vessels leads the industry with their towing capabilities.

Our proprietary seismic processing software, Reveal, has been entirely developed in the 21<sup>st</sup> century and is the most modern, highly interactive, efficient and user-friendly platform for all aspects of processing and imaging on the market.

Together, our acquisition teams, processing geophysicists and R&D group provide our clients with the tools they need to de-risk their exploration and maximise their production efficiency.

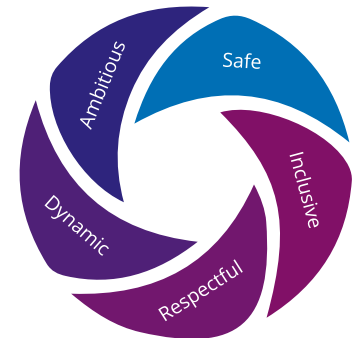
"I hold a sincere belief that our employees of today are the foundation of the successes that we look forward to in the future."

**Irene Waage Basili, CEO Shearwater GeoServices**

## Culture

We believe in a shared working culture, whereby all our global offices and associated staff promote the same five behaviors; Safe, Inclusive, Respectful, Dynamic and Ambitious.

Our employee engagement program '**focus**', built on these five behaviors, provides all employees with the training and understanding of your expectations and Shearwater's responsibilities.



With **focus**, we continually reinforce our culture as the business achieves each stage of our strategy. Our desire is to build an environment in which employees enjoy coming to work.

## Our Mission

- To provide a superior geophysical service
- To add value for all Shearwater stakeholders
- To encourage our staff to grow personally and professionally as experts in their field.

## Our Values

### Safety

We demand and expect safe behaviors from our employees, contractors and clients and provide safe working environments in which to work. Our commitment to safety is at the core of our company culture and at the forefront of everything we do.

### Quality

We meet high standards of quality in both what we do and how we deliver it. We take pride in our product and our service excellence.

### Integrity

We value professional and personal integrity. We achieve our goals by being honest and straight-forward with all of our stakeholders.



## QHSE

Without compromise, we will continue to allocate both human and material resources to ensure our QHSE culture and performance meet your expectations.

Our Industry has always placed an overriding importance on Health and Safety. At Shearwater we acknowledge the duty of care that we hold for the Health and Safety of our employees and contractors.

We demand safe behavior from all of our stakeholders and encourage it as both a personal and a professional value.

**focus** places safety at the forefront of the company's ethos and is a priority factor in every employee's daily routine as well as company appraisal criteria. Shearwater's management systems are aligned to IOGP guidelines, certified to ISO9001 and compliant with ISO14001 and OHSAS18001 standards.

We have implemented best-in-class Integrated Management System software to actively facilitate and transparently communicate QHSE compliance.

Marine seismic acquisition projects can be exposed to unique and variable hazards depending on where in the world prospects are located. Shearwater promotes the use of proactive, leading

indicators. These have been specifically configured to provide our employees with the tools required to identify and manage potential hazards. They also reflect the level of QHSE effort from the workforce. Calculation and publication of such indicators can be used, for example, to actively monitor trends in the safety culture of each crew over the duration of a project, or between two vessels.

Continually improving upon the performance of these indicators drives our ongoing effort towards our goal of zero loss, zero harm and zero rework. Shearwater's Employees and Assets are well proven. We are ideally placed to understand your concerns, meet your expectations and to deliver safe, efficient projects.

Shearwater is a Governing Member of IAGC.

For more information on Shearwater's commitment to employee development and QHSE visit:

[shearwatergeo.com](https://shearwatergeo.com)









## Marine Acquisition

A powerful fleet, complete with modern technology, manned by experienced crews with advanced Fast Track processing capacity.

Work safely and efficiently, in all operating conditions  
- delivering a cost-effective, high-quality service.

## Marine Acquisition

The combination of a modern fleet, advanced technologies and experienced crews makes Shearwater the reliable choice for marine acquisition.



## Safety

Hands-on risk management and our strong safety culture guarantees high performance acquisition even in the most challenging conditions.

## Capability

We have a strong track record of working safely, efficiently, and responsibly in the most challenging exploration provinces around the globe.

## Flexibility

Modern vessels, combined with experienced staff enable us to provide flexible high volume surveys all from the same acquisition platform.



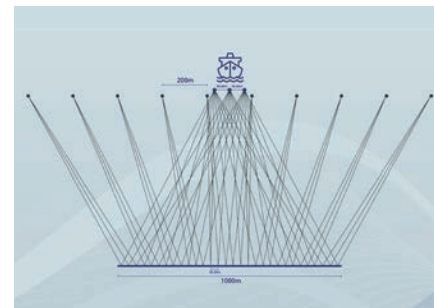
## Survey Planning

Onshore project management and support staff work closely with client project teams, regular subcontractors and our offshore crews to deliver the most complex and bespoke acquisition projects, on time and within budget.



## Onboard Processing

Experienced and well supported Onboard Processing & Imaging teams use Reveal software to carry out everything from Real Time QC to full Fast Track processing.



## FlexiSource

**FlexiSource** is a combination of overlapping sources, continuously recording, and advanced techniques to separate data into individual shot records. This provides opportunities for higher quality data, lower cost and faster acquisition.

## Efficiency with Shearwater

Our integrated approach ensures maximum benefits for our clients and allows a carefully tailored service to precisely match the needs of each project.

Power and redundancy separate Shearwater's vessels from the majority of the world's seismic fleet. We can consistently and safely tow large and wide streamer spreads in harsh frontier environments. It also allows us to operate confidently in obstructed areas, high current environments and in shallow water.

Working together, our acquisition and processing teams provide you with the highest quality seismic data and Fast Track deliverables for every type of survey and for all acquisition techniques.

Our assets, experienced crews, and maritime managers have a strong track record of working safely, efficiently and responsibly in the most challenging exploration provinces around the globe.

Shearwater is fully ISO9001:2008 certified, with offshore operations managed under the ISO14001 environmental standard through our maritime technical managers GC Rieber Shipping.

## We Deliver

### Global Operational Experience

Modern, proven vessels with experienced crews

### Powerful and Reliable Platforms

Capable of operating safely and efficiently in all environments

### Uniform yet Flexible Spreads and Technology

Including **SHarp** Broadband, **FlexiSource**, and **SHarpSig**

### Powered by Reveal

RTQC, Onboard Processing and Fast Track service





## The Fleet







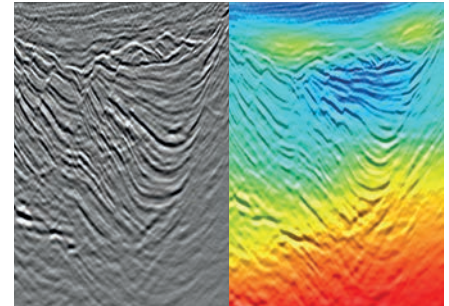


## Processing & Imaging

Agile, responsive teams of experts, available when, where and for however long you need them. Get high-quality data rapidly, reduce costs and build in flexibility at the heart of your project.

## Processing & Imaging

Our Reveal processing software and our imaging experts provide a truly integrated service, with our flexible approach we deliver solutions to meet all your challenges.



## In-house R&D

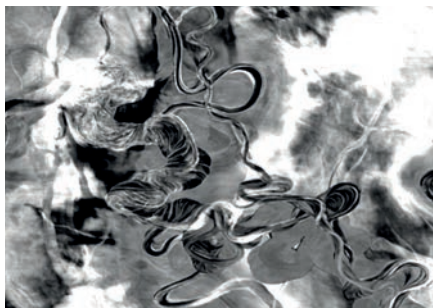
Our in-house R&D department delivers industry leading technology implementing innovative, proprietary algorithms in the Reveal software platform.

## Agile Responsive Teams

Shearwater provide agile teams that can work from existing processing centers or from dedicated 'pop-up' processing centers, so our teams can be close to your project.

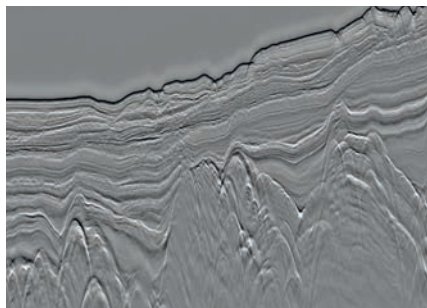
## Capability

Our onboard and onshore processing capabilities provide you with the expertise and service to achieve the highest quality seismic imaging.



## Cost Efficient

Our business model and experienced teams allow us to keep costs low, whilst maintaining delivery of superior quality data.



## Superior Quality Processing

Our expert Geophysicists are able to reprocess your data using Shearwater's advanced technology - producing clearly better results.



## Powered by Reveal

Reveal software gives Shearwater a strong differentiator in the P&I market. By having our own software it allows our geophysicists to apply technology and knowledge, intuitively and interactively.

## Our Processing Teams

Powered by Reveal software, our in-house R&D team delivers industry-leading technology such as **SHarpSig** deghosting, **FlexiSource** deblending and 3D Full Waveform Inversion.

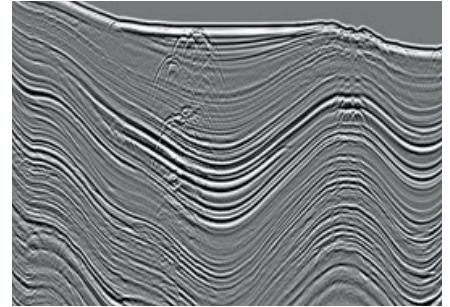
At Shearwater we process your land and marine seismic data by combining the latest processing software with experienced geophysicists and efficient hardware.

Through the implementation of Shearwater Reveal we have the capability and proven experience to offer:

- Acquisition QC & technical supervision on vessels and client offices
- Local Geophysicist resource with a license of Reveal within client's offices to work directly with asset team
- Set-up of a local center or processing hub for projects that require in-country operations for QC or full processing
- Joint R&D collaboration projects
- Software and training tailored to client's requirements

This flexibility benefits each project. By giving clients rapid access to data, speeding up the QC process, reducing the timing between receipt of data and the delivery of the final data, we maximize the value of the seismic results.

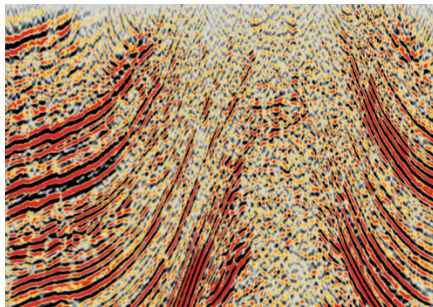
## Our Technology



### SHarp Broadband

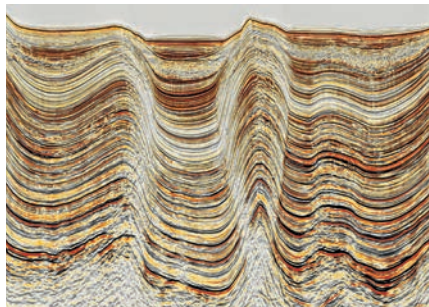
**SHarp** technology provides increased bandwidth from data recorded with legacy, conventional or broadband acquisition.

**SHarpSig** technology allows improved debubble and AVO using the near field hydrophones to compute a directional source signature.



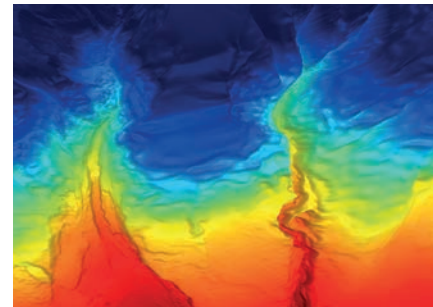
## Land Processing

Shearwater's land processing includes the latest techniques to increase your data quality. Tools including: 3D Radon, Offset Vector Tiling, 3D fkxky, Tau-pxpy denoise, 5D regularization, Time and Depth Migration, plus many more.



## Time Imaging

Our range of imaging techniques can be used to enhance your data; Shot-by-shot design using NFH, True Azimuth 3D SRME, 3D SWME, IME, Anisotropic PSTM, etc.



## Depth Imaging

Depth Imaging capabilities deliver exceptional data results using; TTI Anisotropic, non-parametric tomography, TTI Anisotropic Kirchhoff, Beam, RTM and Shearwater FWI.

Discuss your Processing requirements with our team:

[sales@shearwatergeo.com](mailto:sales@shearwatergeo.com)





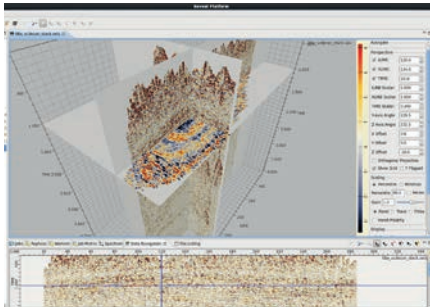
# ***SHEARWATER REVEAL***

## Reveal Software

A modern, powerful and intuitive solution for demanding seismic data analysis, Reveal is a full processing software that can scale to run from a laptop in the field through to the largest data centre.

## Reveal Software

Shearwater Reveal provides a unique, interactive processing platform with real time feedback for picks and parameter selection. This greater interactivity leads to faster and more accurate decision-making.



## Modern

Shearwater Reveal is an intuitive software providing land, marine, time and depth processing in a single user-friendly interface.

## Flexible

This full processing software provides an interactive geophysical platform with an open development environment able to run in the field on laptops to the largest data centers.

## Software for Everyone

Reveal is used internally by Shearwater and is also licensed to oil companies, contractors, consultants and academics world-wide.

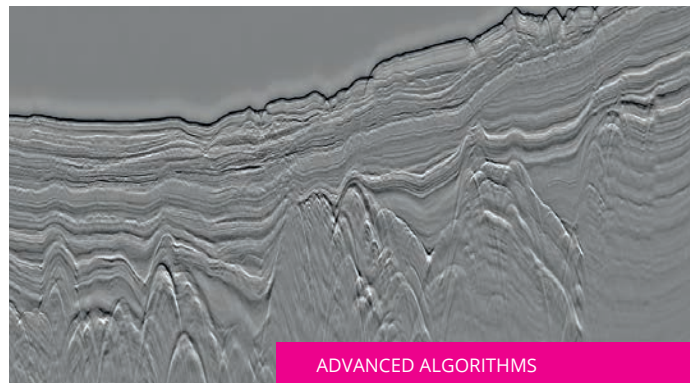




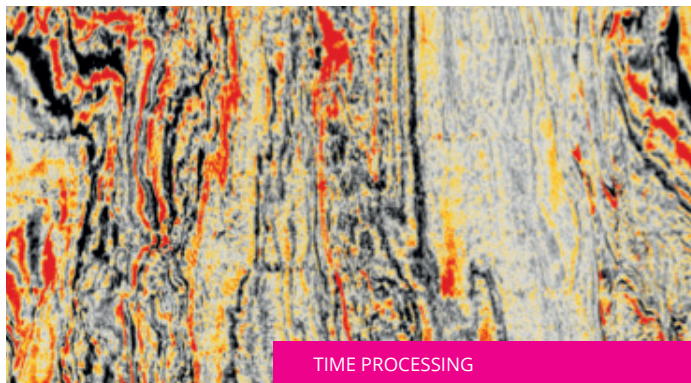
## A Seamless Interface



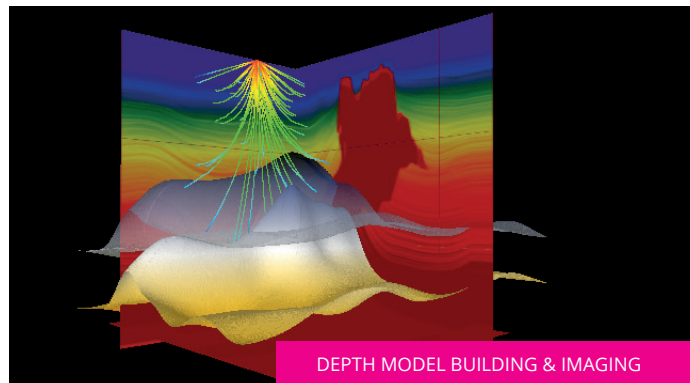
REAL TIME QUALITY CONTROL



ADVANCED ALGORITHMS



TIME PROCESSING



DEPTH MODEL BUILDING & IMAGING

## Processing Capabilities

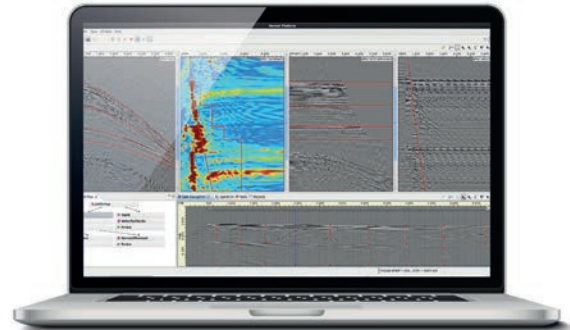
Our software performs time and depth processing and imaging for both land and marine environments from within a single user interface.

Reveal stands alone in the industry as the only seismic processing software product designed and built entirely in the 21<sup>st</sup> Century.

Our R&D teams' capability ensures continuous development of Shearwater Reveal. This benefits the software's use on a variety of projects allowing the team to rapidly deploy new functionality and respond to customer requests.

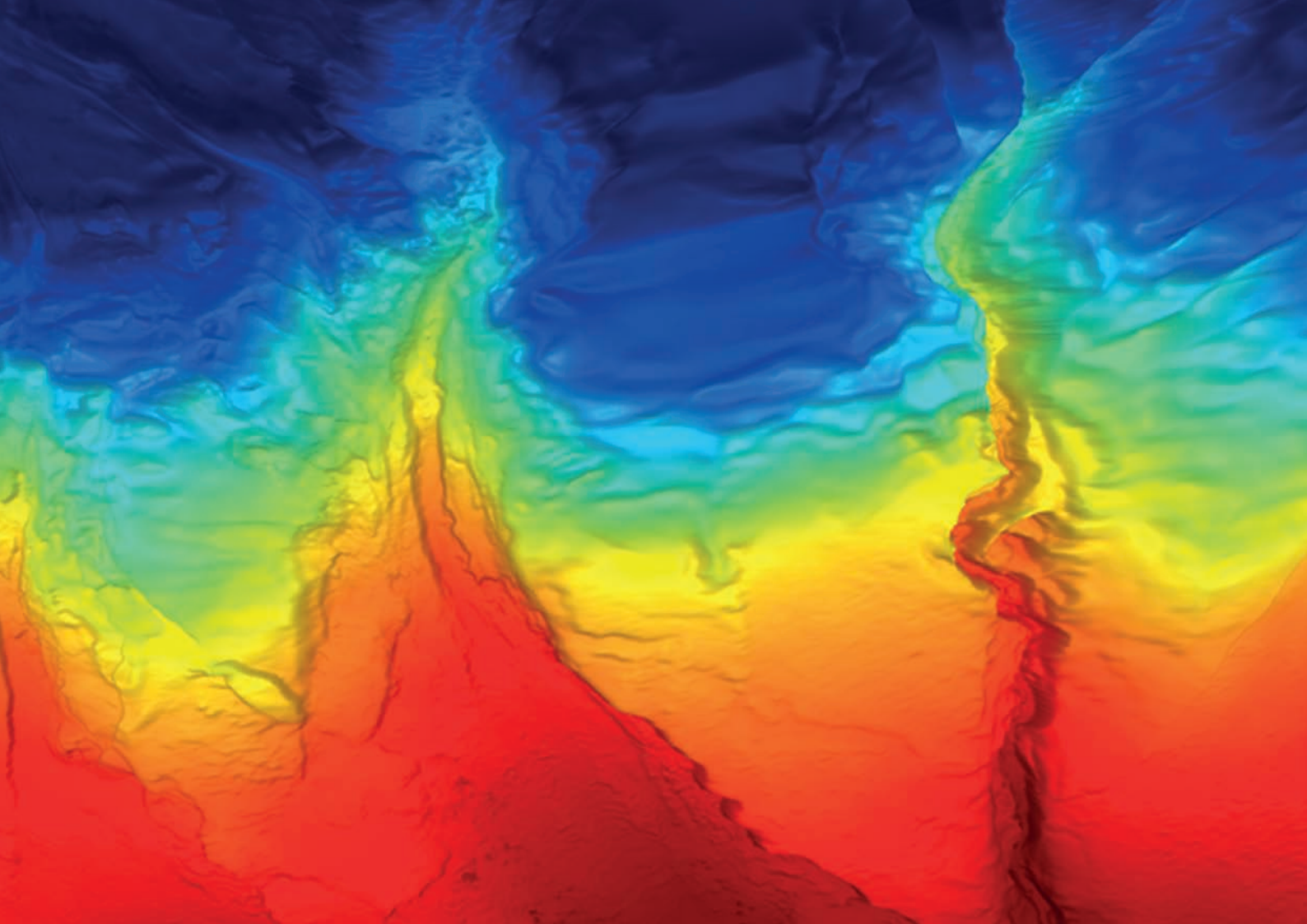
With its advanced batch job management, parallel processing and cluster scalability, geophysicists can achieve highly efficient turnarounds with this easy to use software.

Reveal also provides a developers environment to customers keen to integrate it with their own workflows and processing systems.



Licensed to oil and gas companies, contractors, consultants and academia.

To start your 30-Day free trial visit:  
**[shearwatergeo.com](http://shearwatergeo.com)**







## Multi-Client

Our full service Multi-Client business offers refreshing flexibility and clarity. Reduce financial exposure and maximize your exploration returns.

## Multi-Client

At Shearwater our Multi-Client Team has extensive experience in building world class modern data libraries, helping our clients evaluate new plays in established hydrocarbon exploration and production.



## Experience

Benefit from the experience our teams have gained from their careers in exploring areas of significant hydrocarbon discoveries.

## Understanding

We can be part of your decision making though close collaboration with our technical and commercial teams.

## Full Service

Utilize the full services of Shearwater; marine acquisition, Reveal processing software, in-house R&D team, and the G&G Team.





The Shearwater Multi-Client Team has extensive experience in building world class modern data libraries. This helps our clients both evaluate new plays in established hydrocarbon exploration and production basins, gaining valuable insights into new frontiers or under-explored regions of the world.

Shearwater Multi-Client projects have the advantage of a fully integrated package. This includes our powerful marine acquisition vessels, equipment and techniques, state-of-the-art Reveal processing software and our in-house R&D team. Together with our dedicated Geology and Geophysics Interpretation Team (G&G Team) we can provide you with the most efficient Multi-Client projects.

## Geology and Geophysics Interpretation

Shearwater's G&G Team provides invaluable support for our Multi-Client projects, as well as aiding external client projects where complex geological issues need to be understood.

Our clients benefit from the experience our employees have gained over the years, having been involved in data acquisition, processing, and interpretation of data libraries in areas of significant hydrocarbon discoveries world-wide.

## Research & Development

Our in-house R&D team continuously develop new, industry-leading algorithms to provide innovative ways to improve the image quality we deliver. Most recently the team has produced extensive research resulting in the development of the successful Shearwater **FlexiSource** marine acquisition technique.



***SHEARWATER***



[shearwatergeo.com](http://shearwatergeo.com)