

Depth Processing in Reveal

Shearwater Reveal is land and marine seismic processing software designed and developed to solve QC, time and depth processing challenges.

Shearwater Reveal provides a unique interactive platform, designed to integrate seamlessly with your existing technologies. Created as a complete processing toolkit, Reveal can take your data from field tapes through time processing and depth imaging.

Our depth processing tools offer four packages: Kirchhoff Depth, RTM, Model Building, and Tomography. These are all integrated within the Reveal platform. With our model building package you can tie velocity models to wells, build salt bodies, and iterate to your satisfaction without having to change software.

Kirchhoff Depth

- Kirchhoff Pre Stack Migration
- 2D/3D Isotropic, VTI, TTI
- Wavefront-Reconstruction Raytracing
- Eikonal Travel Time Solver
- Time and Depth Conversions

RTM

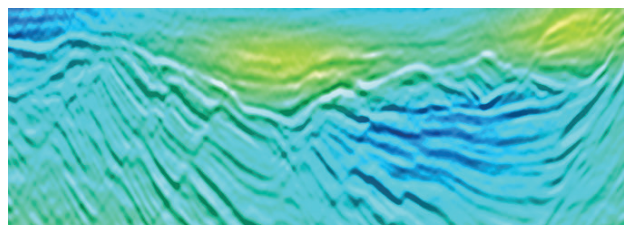
- Reverse Time Migration
- 2D/3D Isotropic, VTI, TTI
- Forward Modeling
- Post Processing
- RTM Angle Gathers
- GPU & CPU Capable
- Illumination Studies

Model Building

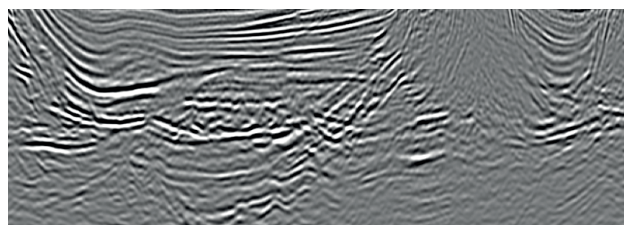
- 2D/3D Rendering and Manipulation
- Horizon-Based Model Building
- Geobodies
- 2D and 3D Views
- Interactive Anisotropic Parameter Scanning
- Illumination via Horizon Hit Count
- Wells
 - Import Las files
 - Well Editor
 - Well Attribute Mapping
 - Well Tie and Manipulation

Tomography

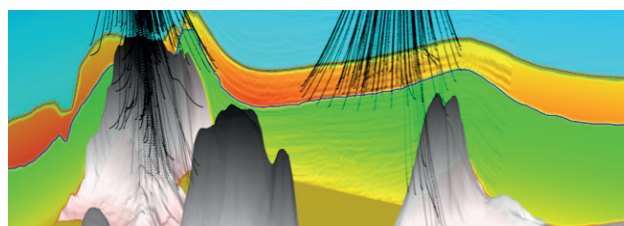
- 2D/3D, NAZ, WAZ
- Grid-based Reflection Tomography
- Automatic/Interactive Picking
- Automatic Dip Estimation



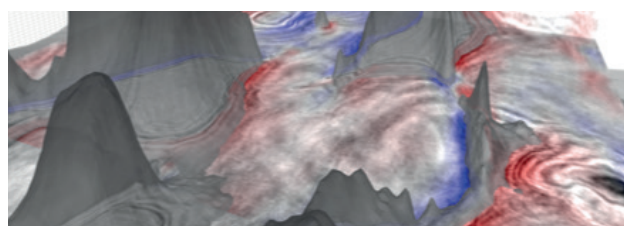
KPSTM - Ireland 3D



RTM - Brazil 2D



Model-Building & Visualization



Tomography - Dip Picking