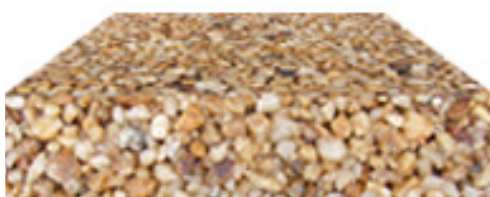


Permeable Driveway (SuDS) using 'Cellweb'TM Typical base build up using a Cellular Confinement System

Recommended Specification for Addaset, Addabound and Terrabound



0.5mm dia. grit cast onto uncured surface



Typical depth of resin bound surface:

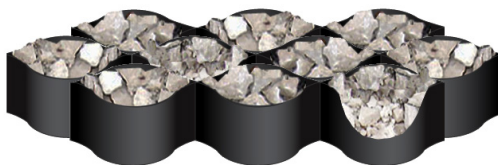
An aggregate size of 6mm or 10mm requires a 45mm depth of Addaset, Addabound or Terrabound.

Surface Course

Hand applied and trowelled to a smooth finish by Addagrip approved installers

Sub-base

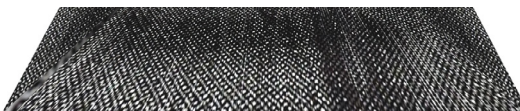
Laid by others in well compacted layers to a minimum fall of 1.5% (1 in 66)



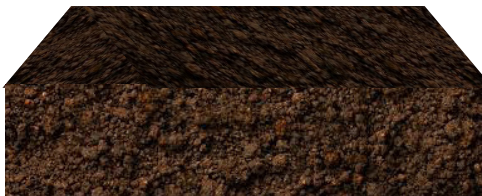
A 125mm Depth of well compacted, non-frost susceptible Type 3 granular sub-base to SHW clause 805 or 4/40, 4/20 graded crushed concrete aggregate to BSEN 12620 or locally available secondary or recycled aggregates which comply with the requirements of the specifications for Highway works for sub-bases in conjunction with a 100mm deep 'Cellweb'TM or similar standard cellular confinement blanket and a 25mm surcharge.

Optional membrane

A 'Cellweb'TM fibretex F4M Geotextile Separation fabric' to prevent upward migration of fine soil particles (optional).



Sub-grade



Please note: this build up is based on a CBR value greater than 3.0%

Note:

A suitable steel, wood, brick, stone or aluminium edging should be provided to ensure a neat edge detail.

Any advise, recommendation or information given by Addagrip Terraco Ltd is based on practical experience and is believed to be accurate at the time of publication. No liability or responsibility of any kind (including liability for negligence) is accepted in this respect by the company, its servants or Agents.

The figures quoted do not constitute a specification, they represent typical values obtained for this product.