

Permeable Pathway (SuDS) using 'CellwebTM' Typical base build up using a Cellular Confinement System

Recommended Specification for Stonebound

stonebound[®]

Surface Course

Hand applied and trowelled to a smooth finish by Addagrip approved installers

0.5mm dia. grit cast onto uncured surface

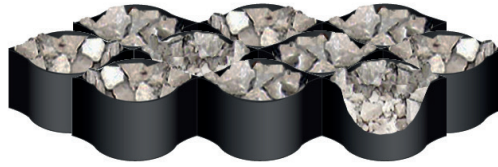


Typical depth of resin bound surface:

An aggregate size of 6mm or 10mm requires a 30mm depth of Stonebound

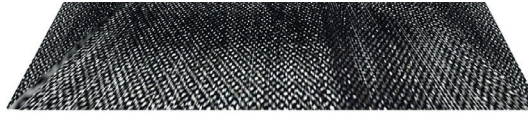
Sub-base

Laid by others in well compacted layers to a minimum fall of 1.5% (1 in 66)



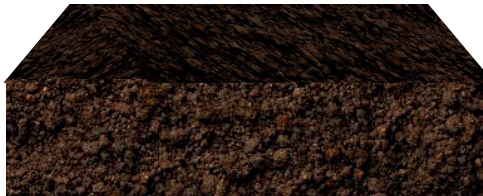
Optional membrane

A 'CellwebTM fibretex F4M Geotextile Separation fabric' to prevent upward migration of fine soil particles (optional).



A 125mm Depth of well compacted, non-frost susceptible Type 3 granular sub-base to SHW clause 805 or 4/40, 4/20 graded crushed concrete aggregate to BSEN 12620 or locally available secondary or recycled aggregates which comply with the requirements of the specifications for Highway works for sub-bases in conjunction with a 100mm deep 'CellwebTM' or similar standard cellular confinement blanket and a 25mm surcharge.

Sub-grade



Please note: this build up is based on a CBR value greater than 3.0%

Note:

A suitable steel, wood, brick, stone or aluminium edging should be provided to ensure a neat edge detail.

Any advice, recommendation or information given by Addagrip Terraco Ltd is based on practical experience and is believed to be accurate at the time of publication. No liability or responsibility of any kind (including liability for negligence) is accepted in this respect by the company, its servants or Agents.

The figures quoted do not constitute a specification, they represent typical values obtained for this product.