

Resin Bound Permeable Surfacing

Recommended Specification for Terrabase Rustic

Permeable Pathway with Cellweb (SUDS)

Typical Base Build Up

Surface Course

Hand applied and trowelled to a rustic finish by Addagrip approved installers.

Terrabase Addagrip

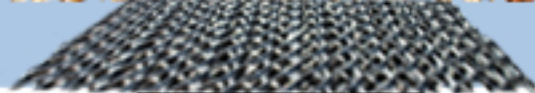
Terrabase Geofabric

Optional Membrane

A 'Cellweb fibretex F4M Geotextile Separation fabric' to prevent upward migration of fine soil particles

Sub-grade

35mm total depth
Terrabase Rustic



Typical depth of Terrabase Rustic resin bound paving surface.

30mm layer of 6-10mm aggregate
(Approx 5mm is incorporated into the Addagrip)

Laid by Addagrip approved installers
Depth of Terrabase Addagrip 7.1mm

Laid by Addagrip approved installers
Depth of Terrabase Geofabric 2.4mm

A 30mm Limestone layer of 6-10mm aggregate laid by others in well compacted layers

A 125mm Depth of well compacted, non-frost susceptible Type 3 granular sub-base to SHW clause 805 or 4/40, 4/20 graded crushed concrete aggregate to BSEN 12620 or locally available secondary or recycled aggregates which comply with the requirements of the specifications for Highway works for sub-bases in conjunction with a 100mm deep 'Cellweb[™]' or similar standard cellular confinement blanket and a 25mm surcharge.

NOTE: A suitable steel, wood, brick, stone or aluminium edging should be provided to ensure a neat edge detail but depending on project requirements the Geofabric can be used as an edging.

Any advice, recommendation or information given by Addagrip Terraco Ltd is based on practical experience and is believed to be accurate at the time of publication, no liability or responsibility of any kind (including liability for negligence) is accepted in this respect by the company, its Servants, or Agents.

